

Trivia

did you know that ...

Pepsi-Cola was originally called 'Brad's drink' after it's creator Caleb Bradham.

Instead of a birthday cake, many children in Russia are given a birthday pie.

Iron weighs more after it rusts because the iron bonds with oxygen, so the weight becomes the original weight of iron plus the original weight of Oxygen..

Michael Jordan was cut from his high school basketball team his sophomore year.

Some breeds of chickens lay colored eggs!

The heart of a mouse beats 650 times per minute!

Prior to 1900, prize fights lasted up to 100 rounds.

At 188 decibels, the whistle of the blue whale is the loudest sound produced by any animal

The giant squid has the largest eyes in the world.

The human heart creates enough pressure to squirt blood 30 ft.

There is a species of clam that can grow up to four feet long and weigh up to 500 pounds.

The ball on top of a flagpole is called a 'truck'.

Hummingbirds can't walk.

In 1987 American Airlines saved \$40,000 by eliminating one olive from its First Class salads.

Coca-Cola was the first soft drink to be consumed in outer space.

[\(http://www.funfactz.com/\)](http://www.funfactz.com/)

PRSRT STD
US POSTAGE
PAID
CHESTERTOWN MD
PERMIT 38

AUTO



Dixon Valve & Coupling Company
800 High Street, Chestertown, MD 21620

THE DIXON DRILLER

"Published once a moon since 1932"

↻ SEPTEMBER *↻*

S	M	T	W	T	F	S
			1	2	3	4
5	6	7	8	9	10	11
12	13	14	15	16	17	18
19	20	21	22	23	24	25
26	27	28	29	30		

2010



The Right Connection™

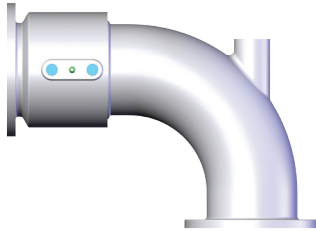
Dixon Valve & Coupling Company
800 High Street, Chestertown, MD 21620

Phone: 410-778-2000 ♦ 877-963-4966
Fax: 800-283-4966 ♦ www.dixonvalve.com

Product Spotlight

Type 35 Loading Arm Swivel and TTMA Flange Extensions

Dixon is pleased to introduce the Type 35 Loading Arm Swivel. This swivel is available in 4" style 30 and style 50, has TTMA flanges on both ends, and comes with a D style shovel handle. The shovel handle is used to guide the API load coupler onto the adapter on the tank truck.

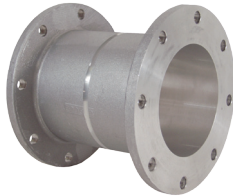


The long radius elbow improves the flow into the API load coupler and provides spacing between the load arm and the tank truck.



Type 35 Loading Arm Swivels can be used with TTMA flange extensions. These flange extensions are used on load arms to connect the API

load coupler to the load arm. The extensions add a 6" space between the load arm and the tank truck, and are available with a groove that



provides a specified parting point to prevent excessive damage to the loading arms.

If you have any questions please contact Dixon's customer service at 800-355-1991.

Product Safety



Dixon's swivel joints are designed to give years of dependable service for their intended use.

The proper selection of a swivel joint for a particular application is of the utmost importance. Users must consider the size, temperature, application, media, and the total weight supported by the swivel joint. Dixon recommends that each swivel joint be inspected and properly maintained on a regular basis. Dixon also recommends that swivel joints be tested each time they are reassembled. If any problem is detected, the swivel joint should be removed from service immediately. Dixon is available to consult, train and recommend the proper swivel joint for a given application. Dixon strongly recommends that distributors and end users utilize Dixon's technical staff to answer any questions.

Dates in History

1957 On September 19th, the United States detonated a 1.7 kiloton nuclear weapon in an underground tunnel at the Nevada Test Site (NTS), a 1,375 square mile research center located 65 miles north of Las Vegas.

1960 On September 28, at Boston's Fenway Park, Red Sox star Ted Williams hit a home run in the last at-bat of his 21-year career.

1969 On September 2nd, America's first automatic teller machine (ATM) made its public debut, dispensing cash to customers at Chemical Bank in Rockville Center, New York.

1998 On September 1, the Intermodal Surface Transportation Efficiency Act of 1991 finally went into effect. The law required that all cars and light trucks sold in the United States have air bags on both sides of the front seat.

On the Lighter Side

Actual 911 Calls

Caller: "I'd like to make a unanimous complaint, so don't use my name."

Caller: "I'm reporting a deer on the road. I almost hit it."

Call-taker: "Is the deer alive?"

Caller: "Oh, no, it's been run over by many, many cars. Again and again, and - OH NO!!! NOT AGAIN!"

Caller: "Am I talking to a real person, or this a recording?"

Caller: "We might (cough) need the fire department here (cough)."

Caller: "Is it okay for a civilian to take a person to the hospital, or does the ambulance have to do it?"

Caller: (irate) "That's 'W' as in Williams and 'Y' as in why."

Caller: "He's not breathing!"

Call-taker: "Can you get the phone close to him?"

Caller: "WHY? You want to hear he's not breathing, too?"

Call-taker: "Does she have any weapons?"

Caller: "Well, she has real long finger nails."

Call-taker: "We'll need a description of him."

Caller: "He's a lawyer."

Caller: "No, she just didn't fall...I helped her!"

Complaint about a stolen mailbox:

Call-taker: "What is your address?"

Caller: "It's gone."

On a whim a man decided to get his wife a dozen roses and surprise her after work.

The minute he opened the door, his wife started screaming at him, "This is the worst day that I have EVER had! The kids have been terrible. They got in a food fight, the washing machine broke and flooded the basement, I burned dinner and the dog chewed up my best pair of shoes..."

She then looked at the roses he was holding, "...and now you've obviously done something wrong!"